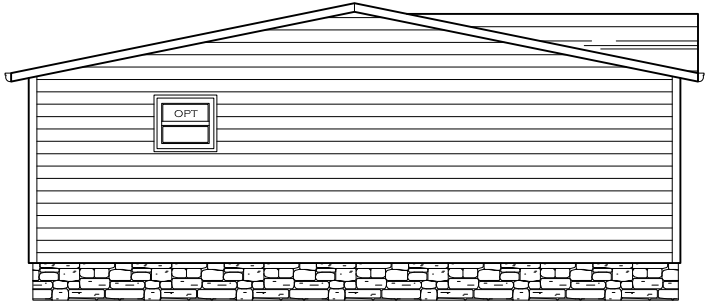
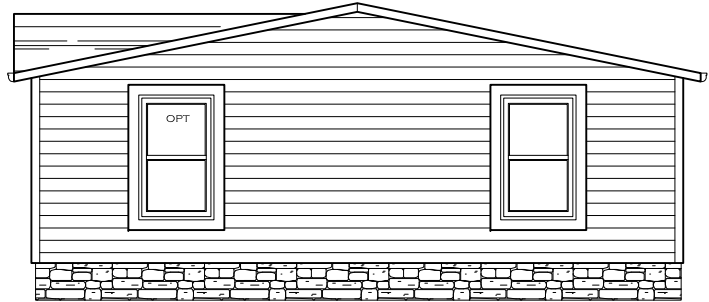


REAR ELEVATION



LEFT SIDE ELEVATION




RIGHT SIDE ELEVATION



FRONT ELEVATION

1159 SQ.FT. (STD PLAN "CONDITIONED")
 N/A SQ.FT. (W/OPT. PORCH/RECESS "CONDITIONED")

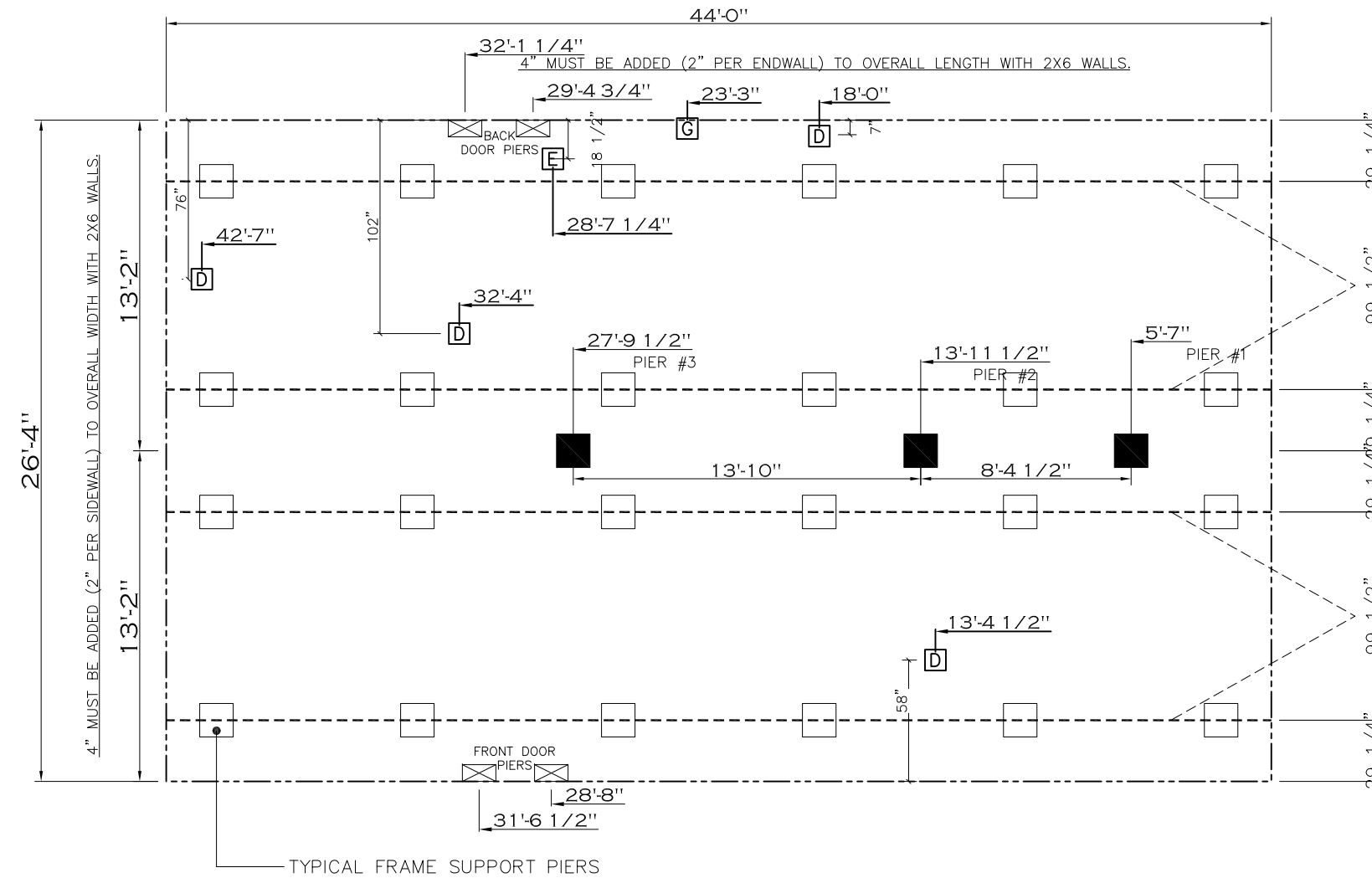
| | | |
|-----------------------------|--|------------|
| CMH MANUFACTURING | Model #: SLT28443A | Drawing #: |
| | Date: 7/1/14 | Scale: NTS |
| Product Designer: JDC | 28' x 44' Solution | |
| ELEVATION |  REVISION ECR- 6/8/16 JDC | |

| 20 lb ROOF LOAD SIDEWALL OPENING PIER LOAD 28' BOX WIDTH | SIDEWALL OPENING (FT) REQUIRED PIER LOAD (LBS) | | | | | |
|--|---|------|------|------|------|------|
| | 3 | 4 | 5 | 6 | 8 | 10 |
| | 1175 | 1330 | 1485 | 1640 | 1950 | 2260 |

*FOR 30 lb & 40 lb ROOF LOAD REFER TO TABLES 7b & 7c IN THE INSTALLATION MANUAL.

| SERVICE DROP LEGEND | |
|---------------------|---------------------|
| | = ELECTRICAL DROP |
| | = WATER INLET |
| | = DWV PLUMBING DROP |
| | = GAS INLET |

| PIER LEGEND | |
|-------------|---|
| | = SUPPORT UNDER MATING OPENING |
| | = SUPPORT AT MATING COLUMN |
| | = SUPPORT UNDER MATING WALL |
| | = PIER PORCH/RECESSED ENTRY |
| | = PIER MAIN BEAM |
| | = PIER PERIMETER |
| | = TIE-DOWN SUPPORT (QTY PER TBL M, SEE DETAIL D-6 IN FOUND. PKG.) |



GENERAL NOTES:

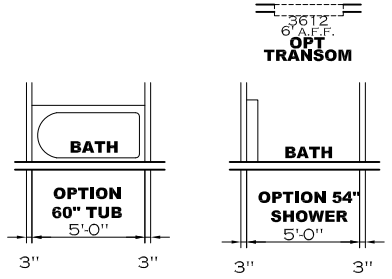
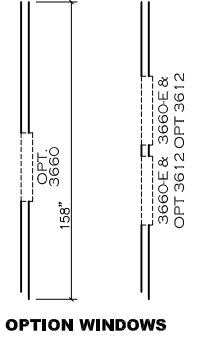
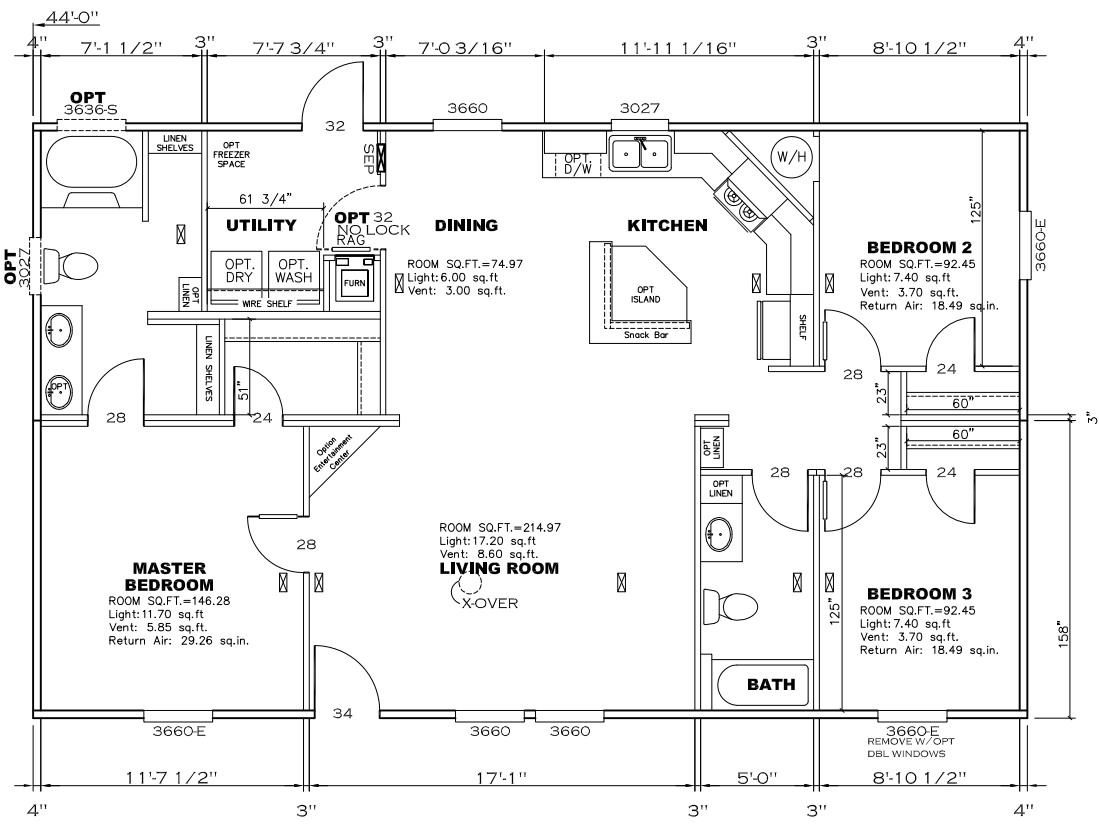
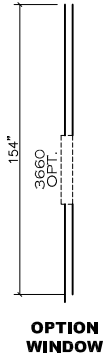
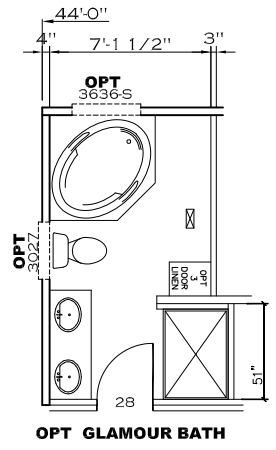
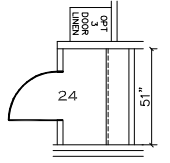
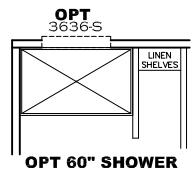
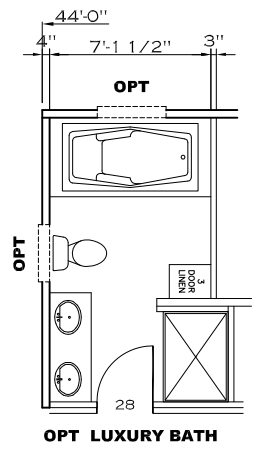
- PIER LOADS SHOWN ARE TO BE USED TO SIZE THE FOOTINGS BELOW THE MARRIAGEWALL FOR COLUMN SUPPORT PIERS. REFER TO TABLES 6b AND 6c IN THE INSTALLATION MANUAL FOR LOAD ON FRAME PIER FOOTINGS FOR HOMES THAT DO NOT REQUIRE PERIMETER BLOCKING. REFER TO TABLES 7b AND 7c IN THE INSTALLATION MANUAL FOR LOAD ON FRAME PIER FOOTINGS THAT REQUIRE PERIMETER BLOCKING. REFER TO TABLES 10 AND 10a TO DETERMINE FOOTING SIZE FOR ALL PIERS.
- REFER TO TABLE 9 FOR PIER CONFIGURATION AND MAXIMUM ALLOWABLE HEIGHTS. CROSS REFERENCE THE PIER HEIGHT WITH THE MAXIMUM ALLOWABLE FLOOR HEIGHT LISTED IN THE FRAME TIEDOWN CHARTS (TABLE 18, 19, AND 20).
- FLOOR WIDTH SHOWN IS FOR STANDARD PRODUCT ONLY. CONTACT THE MFG PLANT FOR SPECIFICATIONS OF OPTIONS ORDERED.
- SERVICE DROP LOCATIONS IDENTIFIED ARE APPROXIMATE.
- THE MAXIMUM SPACING FOR FRAME SUPPORT PIERS FOR 8" I-BEAMS IS 8 FEET, 10" & 12" I-BEAMS ARE 10 FEET.

| 20 psf Roof Live Load | | |
|-----------------------|---------------------|-----------------|
| Column Pier # | Distance from Hitch | Pier Load (lbs) |
| 1 | 5.583 | 2054 |
| 2 | 13.958 | 4786 |
| 3 | 27.792 | 3132 |

| 30 psf Roof Live Load | | |
|-----------------------|---------------------|-----------------|
| Column Pier # | Distance from Hitch | Pier Load (lbs) |
| 1 | 5.583 | 3659 |
| 2 | 13.958 | 6248 |
| 3 | 27.792 | 5096 |

| 40 psf Roof Live Load | | |
|-----------------------|---------------------|-----------------|
| Column Pier # | Distance from Hitch | Pier Load (lbs) |
| 1 | 5.583 | 4473 |
| 2 | 13.958 | 7710 |
| 3 | 27.792 | 6270 |

| | | | |
|--------------------------------------|------------------------------------|--|----------------------|
| 1159 SQ.FT. (STD PLAN "CONDITIONED") | | N/A SQ.FT. (W/OPT. PORCH/RECESS "CONDITIONED") | |
| CMH MANUFACTURING | Model #: SLT28443A Date: 7/1/14 | Scale: NTS | Drawing #: 38M137 |
| Product Designer: JDC | | 28' x 44' Solution | |
| PIER LOADS | | | |



APPROVED **HWG** **APPROVED**

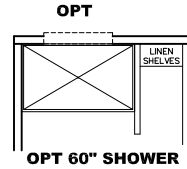
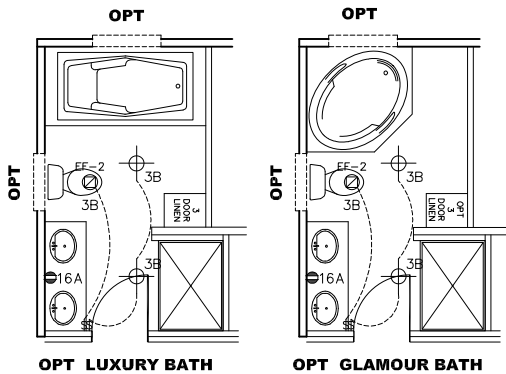
REVISED

SEPT 30 2016

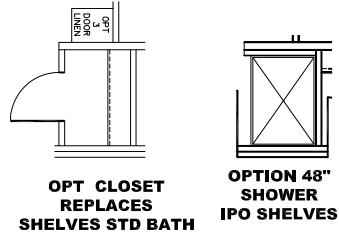
Federal Manufactured
Home Construction
And Safety Standards

FP-28-4413

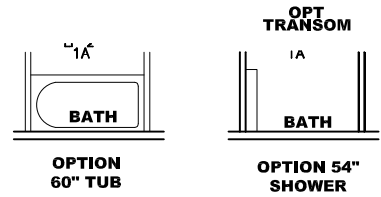
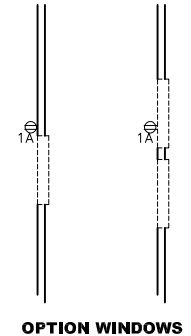
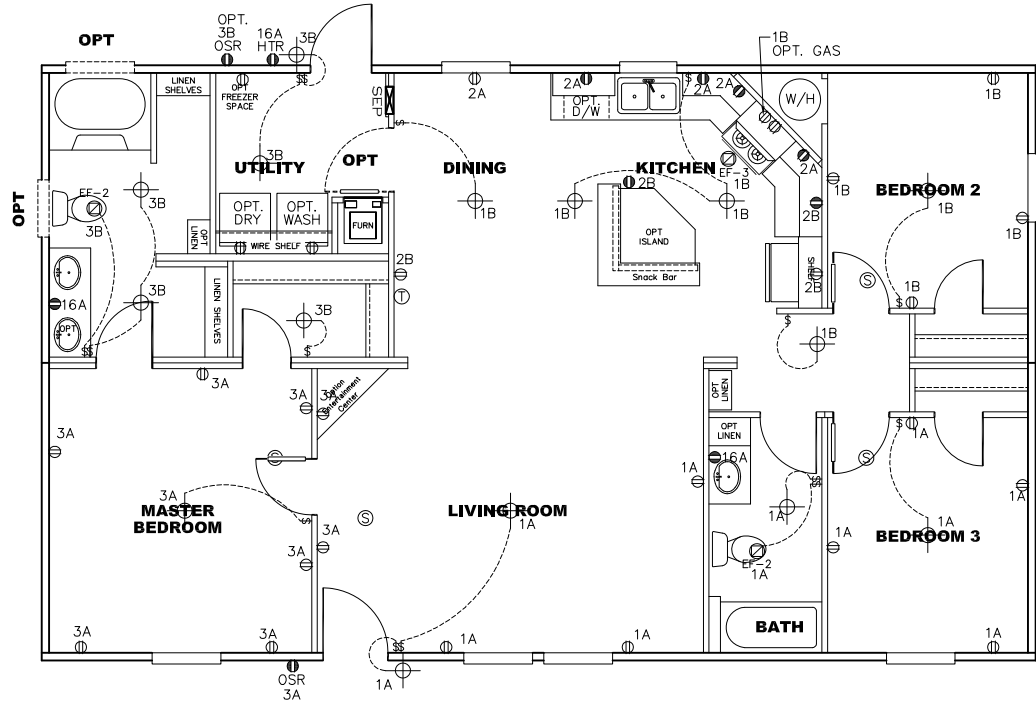
| | |
|--|--|
| 1159 SQ.FT. (STD PLAN "CONDITIONED") | |
| N/A SQ.FT. (W/OPT. PORCH/RECESS "CONDITIONED") | |
| CMH MANUFACTURING | Model #: SLT28443A Date: 7/1/14 Scale: NTS |
| Product Designer: JDC | 38MI37 Drawing #: |
| 28' x 44' Solution | |
| FLOOR PLAN | |
| 8/ REVISION ECR-882138 9/22/16 JDC | |



| CIRCUIT | CIRCUIT # | WIRE | BREAKER | CIRCUIT | CIRCUIT # | WIRE | BREAKER | CIRCUIT | CIRCUIT # | WIRE | BREAKER |
|----------------|------------------|------|-------------|--------------|---------------|-------------|---------|------------|-----------|------|-------------|
| LIGHT/RECEP | 1A,1B,3A,B,C,14A | 14-2 | 15-SP | WATER HEATER | 4A,6B | SEE NOTE #8 | | BATH/HTR | 16 A | 12-2 | 20-SP |
| KITCHEN/DINING | 2A, 2B | 12-2 | 20-SP | RANGE | 5B,7A | SEE NOTE #8 | | OPT 6/DISP | 9B | | SEE NOTE #8 |
| WASHER | 12A | 12-2 | 20-SP | FURNACE | 6A,8A,B,10A,B | SEE NOTE #8 | | OPT SPA/ | 11A,B | | SEE NOTE #8 |
| DRYER | 5A,7B | | SEE NOTE #8 | OPT D./WASH | 9A | SEE NOTE #8 | | WP/JAC | | | |
| | | | | SMOKE ALARM | 4B | SEE NOTE #8 | | FREEZER | 13 A | | SEE NOTE #8 |



APPROVED **HWG** **APPROVED**
 REVISED
 SEPT 30 2016
 Federal Manufactured Home Construction And Safety Standards



- NOTES:
- ALL CIRCUITS SHOWN ARE FOR REFERENCE AND MAY BE CHANGED BASED ON OPTIONAL COMPONENTS INSTALLED IN THE HOME.
 - REFER TO EL SECTION OF THE DAPIA FOR SYMBOL CHART.
 - EITHER LIGHT OR RECEPTACLE MUST CONNECT TO SWITCH.
 - EF-1= 50 CFM EXHAUST FAN REQUIRED FOR THERMAL ZONE III. THERMAL ZONES I & II MAY USE FAN OR WINDOW W/1.5 SQ. FT. OPENABLE GLASS.
 - EF-2= 50 CFM EXHAUST FAN REQUIRED THERMAL ZONE I, II, AND III.
 - EF-3= 100 CFM RANGE EXHAUST FAN, SWITCH AT HOOD.
 - EF-4= WHOLE HOUSE VENTILATION PER REQUIREMENTS IN S-HV-10 & 10A OR M-HV-11 & 11A OF DAPIA.
 - REFER TO EL SECTION OF THE DAPIA OR THE MFG. INSTALLATION INSTRUCTIONS FOR PROPER WIRE SIZE AND BREAKER SIZE FOR SPECIFIC APPLIANCE AND MODEL BEING INSTALLED.
 - ALL SMOKE ALARMS TO BE LOCATED ON THE CEILING.
 - DIMENSIONS SHOWN ON PRINT ARE APPROXIMATE AND TO BE USED ONLY AS A GUIDELINE.

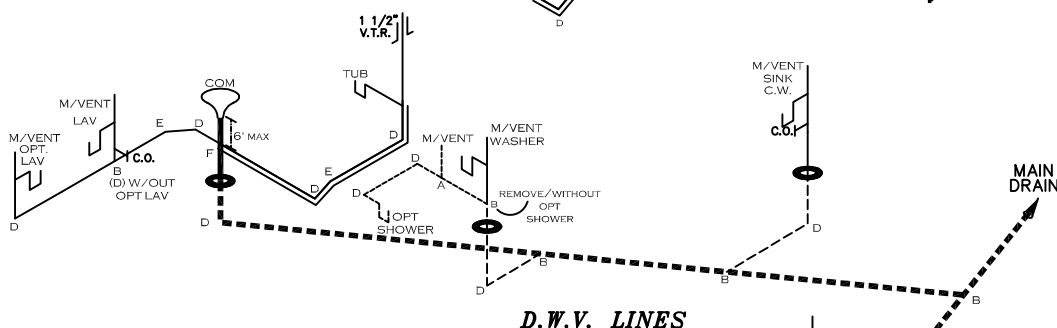
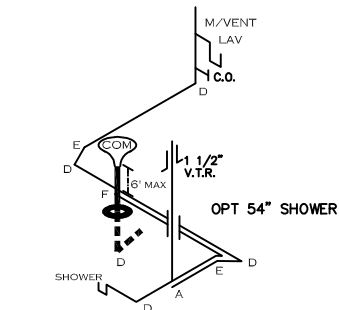
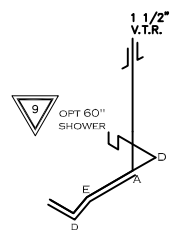
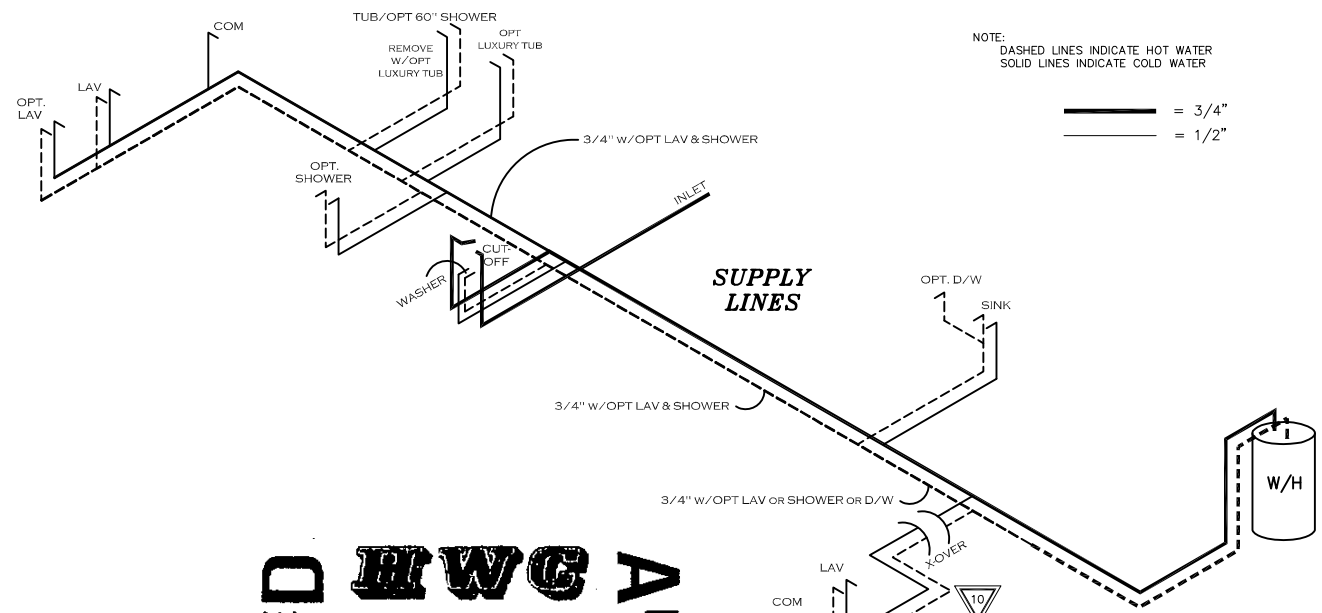
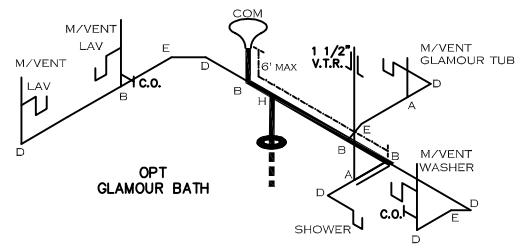
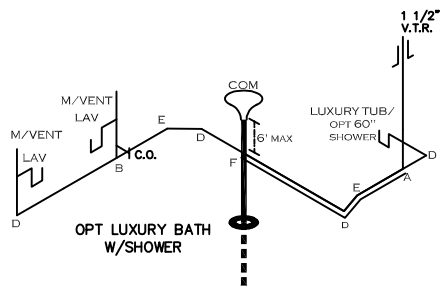
FP-28-4413

1159 SQ.FT. (STD PLAN "CONDITIONED")
 N/A SQ.FT. (W/OPT. PORCH/RECESS "CONDITIONED")

| | | |
|-----------------------------|--------------------|------------|
| CMH MANUFACTURING | Model #: SLT28443A | Drawing #: |
| | Date: 7/11/14 | Scale: NTS |
| Product Designer: JDC | 28' x 44' Solution | |

ELECTRICAL PLAN-06

5/REVISION ECR-982138
9/22/16 JDC



APPROVED **HWC** **APPROVED**
 REVISED
 JUN 3 2016
 Federal Manufactured
 Home Construction
 And Safety Standards

| LEGEND | |
|--------|------------------------|
| A | SHORT TURN T-Y |
| B | LONG TURN T-Y |
| C | 1/4 BEND |
| D | LONG SWEEP 1/4 BEND |
| E | 45 ELL |
| F | DBL. SANITARY TEE |
| G | 4x3 CLOSET ELL |
| H | DOUBLE ELL |
| I | 22 1/2" ELL |
| J | 45° Y |
| K | LONG TURN STREET ELBOW |
| L | 45 FTG ELL |

| DWV LINE SIZE CHART | |
|---------------------|----------|
| | = 3" |
| | = 2" |
| | = 1 1/2" |

FP-28-4413

1159 SQ.FT. (STD PLAN "CONDITIONED")
 N/A SQ.FT. (W/OPT. PORCH/RECESS "CONDITIONED")

| | | |
|--------------------------------|--------------------|--|
| CMH MANUFACTURING | Model #: SLT28443A | Drawing #: |
| | Date: 7/1/14 | Scale: NTS 38M137 |
| Product Designer: JDC | 28' x 44' Solution | |
| D.W.V. and Supply Lines | | REVISION ECR-835475 6/1/16 JDC |