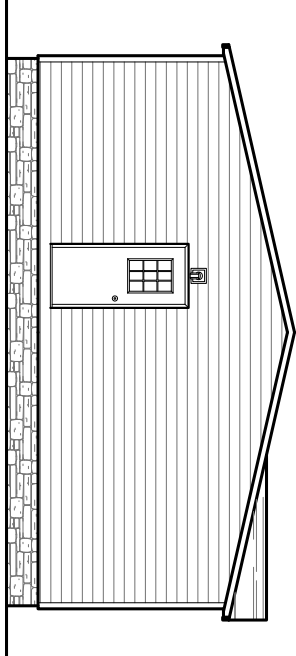
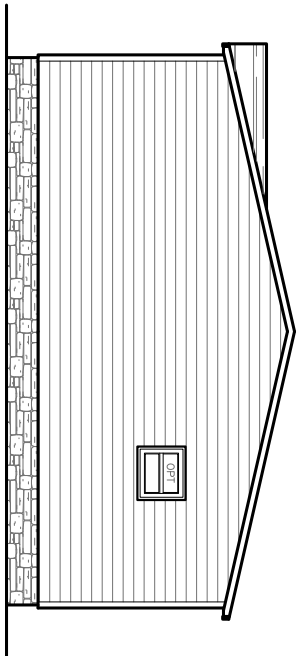


REAR ELEVATION



LEFT SIDE ELEVATION



RIGHT SIDE ELEVATION



FRONT ELEVATION

| | |
|---|--------------------|
| 1478 SQ. FT. (STD PLAN (CONDONORED)) | |
| SQ. FT. (W/OPT. PORCH/RECESS (CONDONORED)) | |
| CMH | Model #: S1T28563D |
| MANUFACTURING | Order/Rev: 38M151 |
| Product Designer: JDC | 28' x 56' Solution |
| ELEVATION | |

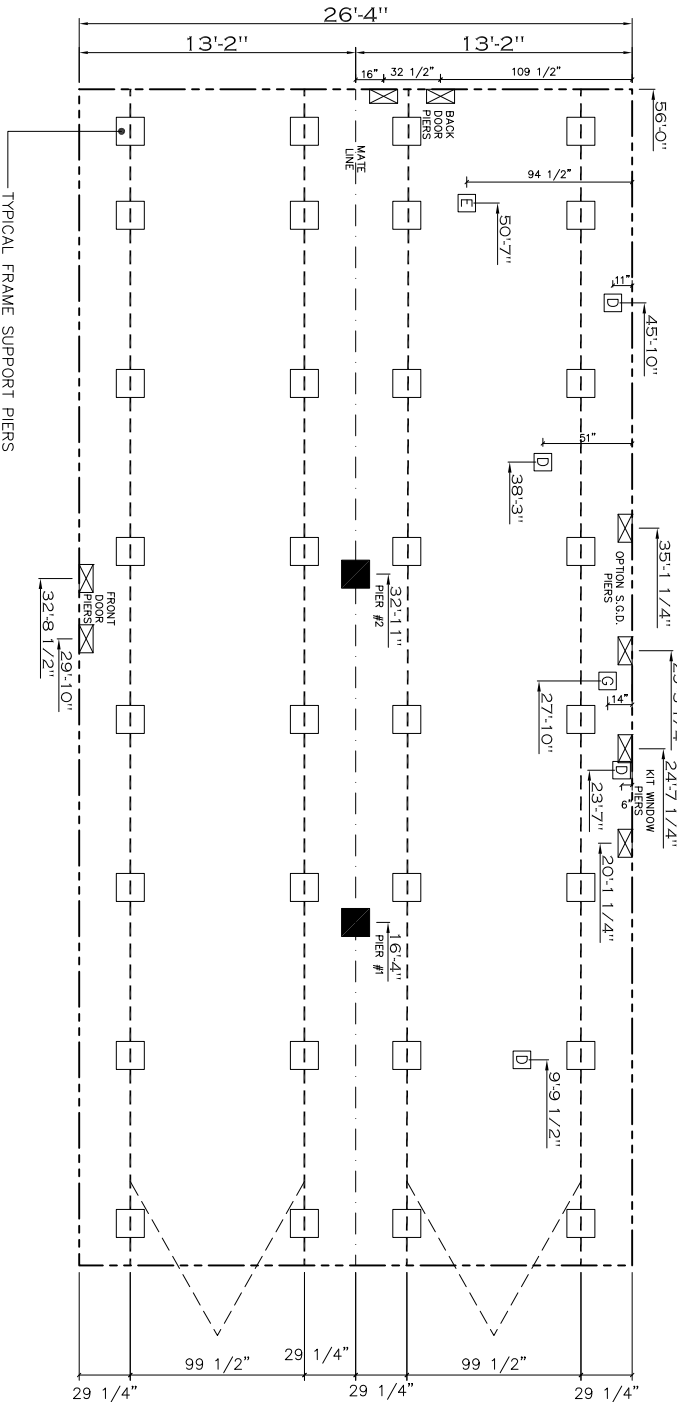
| 20 lb ROOF LOAD SIDEWALL OPENING PIER LOAD 28' BOX WIDTH | SIDEWALL OPENING (FT) REQUIRED PIER LOAD (LBS) | | | | | |
|--|---|------|------|------|------|------|
| | 3 | 4 | 5 | 6 | 8 | 10 |
| | 1175 | 1330 | 1485 | 1640 | 1950 | 2260 |

*FOR 30 lb & 40 lb ROOF LOAD REFER TO TABLES 7b & 7c IN THE INSTALLATION MANUAL.

| 20 psf Roof Live Load | | |
|-----------------------|---------------------|-----------------|
| Column Pier # | Distance from Hitch | Pier Load (lbs) |
| 1 | 16,334 | 3675 |
| 2 | 32,917 | 3675 |

| 30 psf Roof Live Load | | |
|-----------------------|---------------------|-----------------|
| Column Pier # | Distance from Hitch | Pier Load (lbs) |
| 1 | 16,334 | 5820 |
| 2 | 32,917 | 5820 |

| 40 psf Roof Live Load | | |
|-----------------------|---------------------|-----------------|
| Column Pier # | Distance from Hitch | Pier Load (lbs) |
| 1 | 16,334 | 7175 |
| 2 | 32,917 | 7175 |



GENERAL NOTES:

- PIER LOADS SHOWN ARE TO BE USED TO SIZE THE FOOTINGS BELOW THE MARRIAGEWALL FOR COLUMN SUPPORT PIERS. REFER TO TABLES 6b AND 6c IN THE INSTALLATION MANUAL FOR LOAD ON FRAME PIER FOOTINGS. FOR HOMES THAT DO NOT REQUIRE PERIMETER BLOCKING, REFER TO TABLES 7b AND 7c IN THE INSTALLATION MANUAL FOR LOAD ON FRAME PIER FOOTINGS THAT REQUIRE PERIMETER BLOCKING. REFER TO TABLES 10 AND 10a TO DETERMINE FOOTING SIZE FOR ALL PIERS.
- REFER TO TABLE 9 FOR PIER CONFIGURATION AND MAXIMUM ALLOWABLE HEIGHTS. CROSS REFERENCE THE PIER HEIGHT WITH THE MAXIMUM ALLOWABLE FLOOR HEIGHT LISTED IN THE FRAME TIEDOWN CHARTS (TABLE 18, 19, AND 20).
- FLOOR WIDTH SHOWN IS FOR STANDARD PRODUCT ONLY. CONTACT THE MFG PLANT FOR SPECIFICATIONS OF OPTIONS ORDERED.
- SERVICE DROP LOCATIONS IDENTIFIED ARE APPROXIMATE.
- THE MAXIMUM SPACING FOR FRAME SUPPORT PIERS FOR 8" I-BEAMS IS 8 FEET, 10" & 12" I-BEAMS ARE 10 FEET.

PIER LEGEND

- = SUPPORT UNDER MAINING OPENING
- = SUPPORT AT MAINING COLUMN
- = SUPPORT UNDER MAINING WALL
- = PIER PORCH/RECESS ENTRY
- = PER MAIN BEAM
- = PER PERIMETER
- = TE-DOWN SUPPORT (OV PER TB M, SEE DETAIL D-6 IN FOUND. PKG.)

SERVICE DROP LEGEND

- = ELECTRICAL DROP
- = WATER INLET
- = DWV PLUMBING DROP
- = GAS INLET

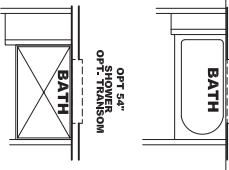
1475 SQ.FT. (STD PLAN "CONDITIONED")
 SQ.FT. (W/OPT. PORCH/RECESS "CONDITIONED")

CMH
 MANUFACTURING

Product Designer: JDC

PIER LOADS

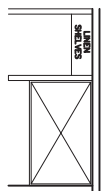
| | |
|--------------------|------------|
| Model #: SLT28563D | Drawing #: |
| Date/Version: | Issue: N/A |
| 28' x 56' Solution | |
| 38M151 | |



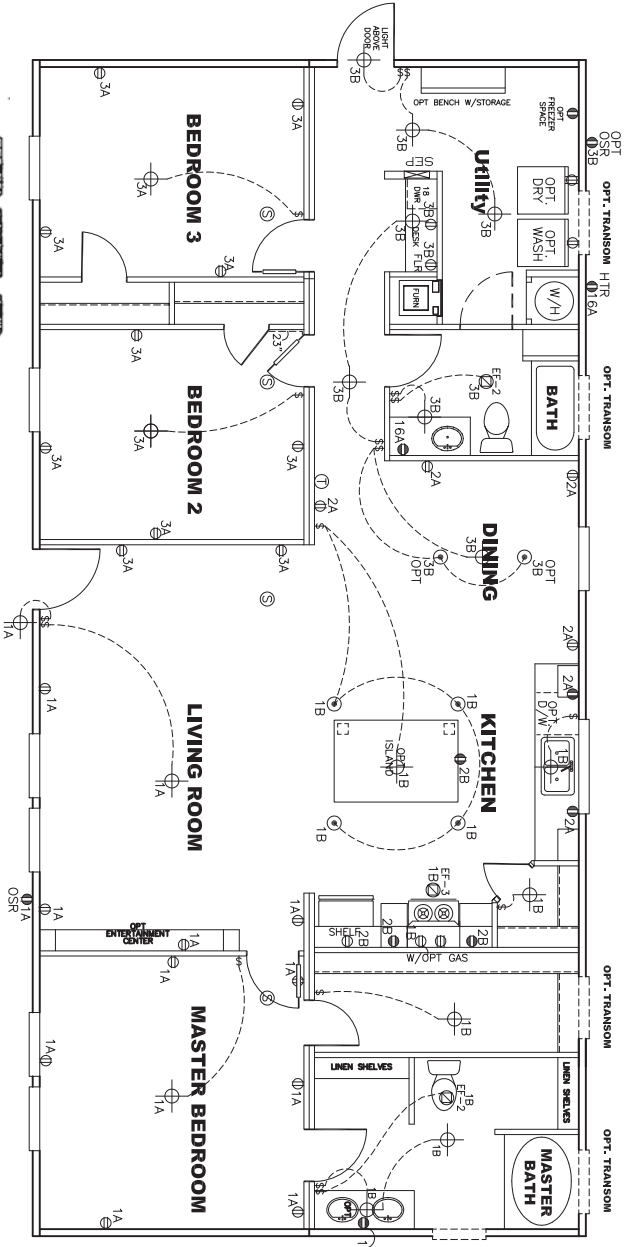
OPT 54L
OPT TRANSOM



OPT 60 "SHOWER



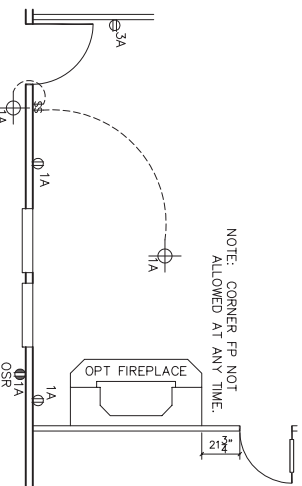
- NOTES:
1. ALL CIRCUITS SHOWN ARE FOR REFERENCE AND MAY BE CHANGED BASED ON OPTIONAL COMPONENTS INSTALLED IN THE HOME.
 2. REFER TO EL SECTION OF THE DAPIA FOR SYMBOL CHART.
 3. EITHER LIGHT OR RECEPTACLE MUST CONNECT TO SWITCH.
 4. EF-1 = 50 CFM EXHAUST FAN REQUIRED FOR THERMAL ZONE III THERMAL ZONES I & II MAY USE FAN OR WINDOW W/1.5 SQ. FT. OPENABLE GLASS.
 5. EF-2 = 50 CFM EXHAUST FAN REQUIRED THERMAL ZONE I, II, AND III.
 6. EF-3 = 100 CFM RANGE EXHAUST FAN, SWITCH AT HOOD.
 7. EF-4 = WHOLE HOUSE VENTILATION PER REQUIREMENTS IN S-HV-10 & 10A OR M-HV-11 & 11A OF DAPIA.
 8. REFER TO EL SECTION OF THE DAPIA OR THE MFG. INSTALLATION INSTRUCTIONS FOR PROPER WIRE SIZE AND BREAKER SIZE FOR SPECIFIC APPLIANCE AND MODEL BEING INSTALLED.
 9. ALL SMOKE ALARMS TO BE LOCATED ON THE CEILING.
 10. DIMENSIONS SHOWN ON PRINT ARE APPROXIMATE AND TO BE USED ONLY AS A GUIDELINE.



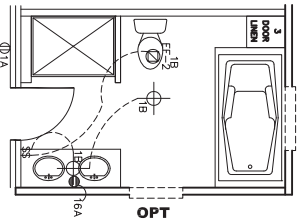
APPROVED
REVISED
OCT 24 2016
Federal Manufactured Home Construction And Safety Standards

FP-28-4799

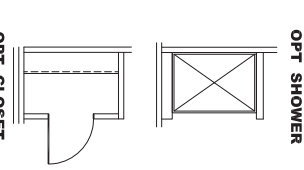
| CIRCUIT | CIRCUIT # | WIRE | BREAKER | CIRCUIT | CIRCUIT # | WIRE | BREAKER | CIRCUIT | CIRCUIT # | WIRE | BREAKER |
|----------------|-------------|-------------|---------|--------------|---------------|-------------|---------|------------|-----------|-------------|---------|
| LIGHT/RECP | 1A,1B,3A,3B | 14-2 | 15-SP | WATER HEATER | 4A,BB | SEE NOTE #8 | | BATHROOM | 16A | 12-2 | 20-SP |
| KITCHEN/DINING | 2A,2B | 12-2 | 20-SP | RANGE | 5B,7A | SEE NOTE #8 | | OPT G/DISP | 9B | SEE NOTE #8 | |
| WASHER | 12A | 12-2 | 20-SP | FURNACE | 6A,8A,B,10A,B | SEE NOTE #8 | | OPT SFA/W | 11A,B | SEE NOTE #8 | |
| DRYER | 5A,7B | SEE NOTE #9 | | OPT D/WASH | 9A | SEE NOTE #8 | | W/LAC | 13A | SEE NOTE #8 | |
| REFRIGERATOR | 2C | 12-2 | 20-SP | GAS RANGE | 4B | SEE NOTE #8 | | FRELEZER | | | |



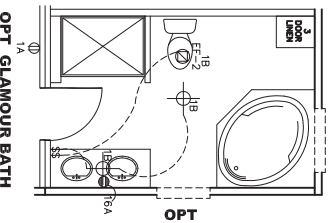
NOTE: CORNER FP NOT ALLOWED AT ANY TIME.



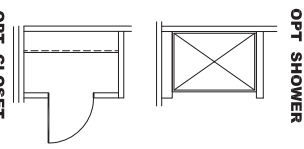
OPT LUXURY BATH



OPT SHOWER



OPT GLAMOUR BATH



OPT CLOSET REPLACES SHELVES STD BATH

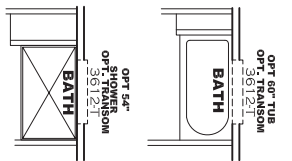
1475 SQ.FT. (STD PLAN "CONDITIONED")
SQ.FT. (W/OPT. PORCH/RECESS "CONDITIONED")

CMH MANUFACTURING

Model #: 51T28563D Drawing #: 38M151

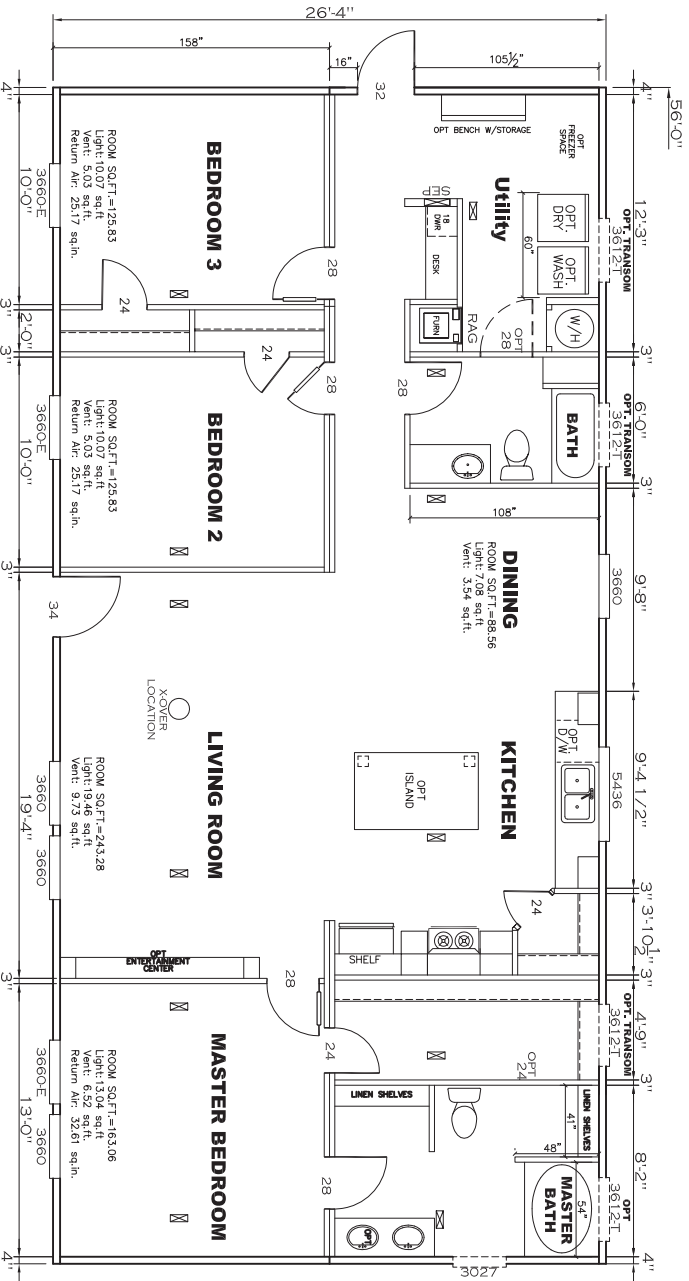
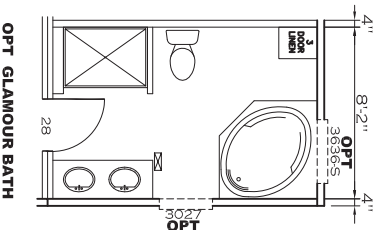
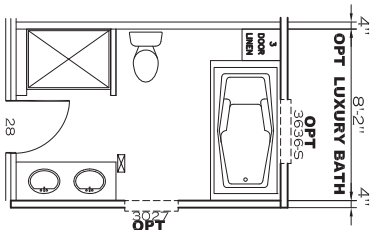
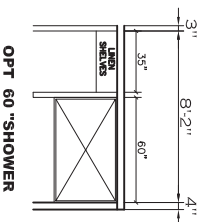
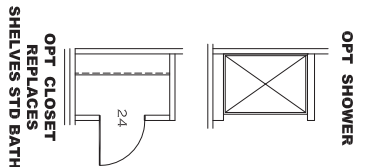
Product Designer: JDC

ELECTRICAL PLAN-06

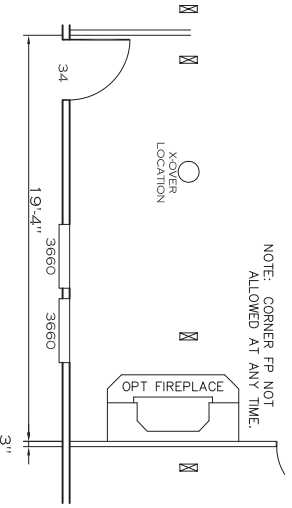


APPROVED
REVISED
 OCT 24 2016
 Federal Manufactured
 Home Construction
 And Safety Standards

APPROVED



NOTE: CORNER FP NOT ALLOWED AT ANY TIME.

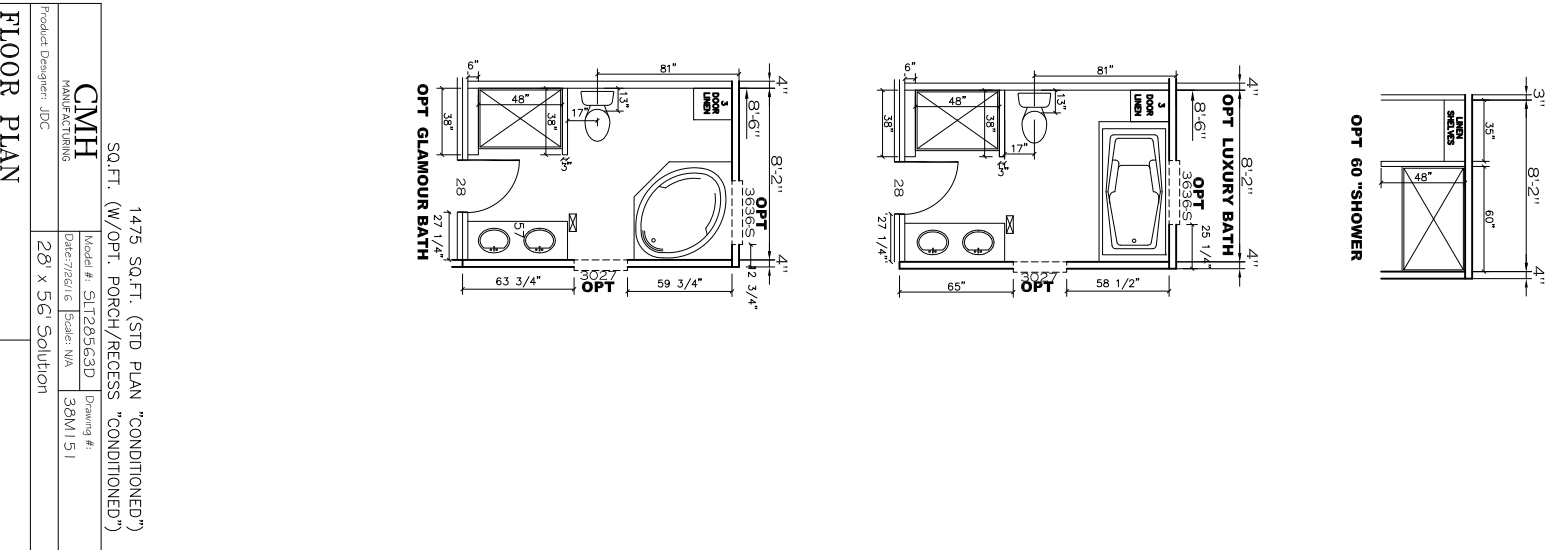
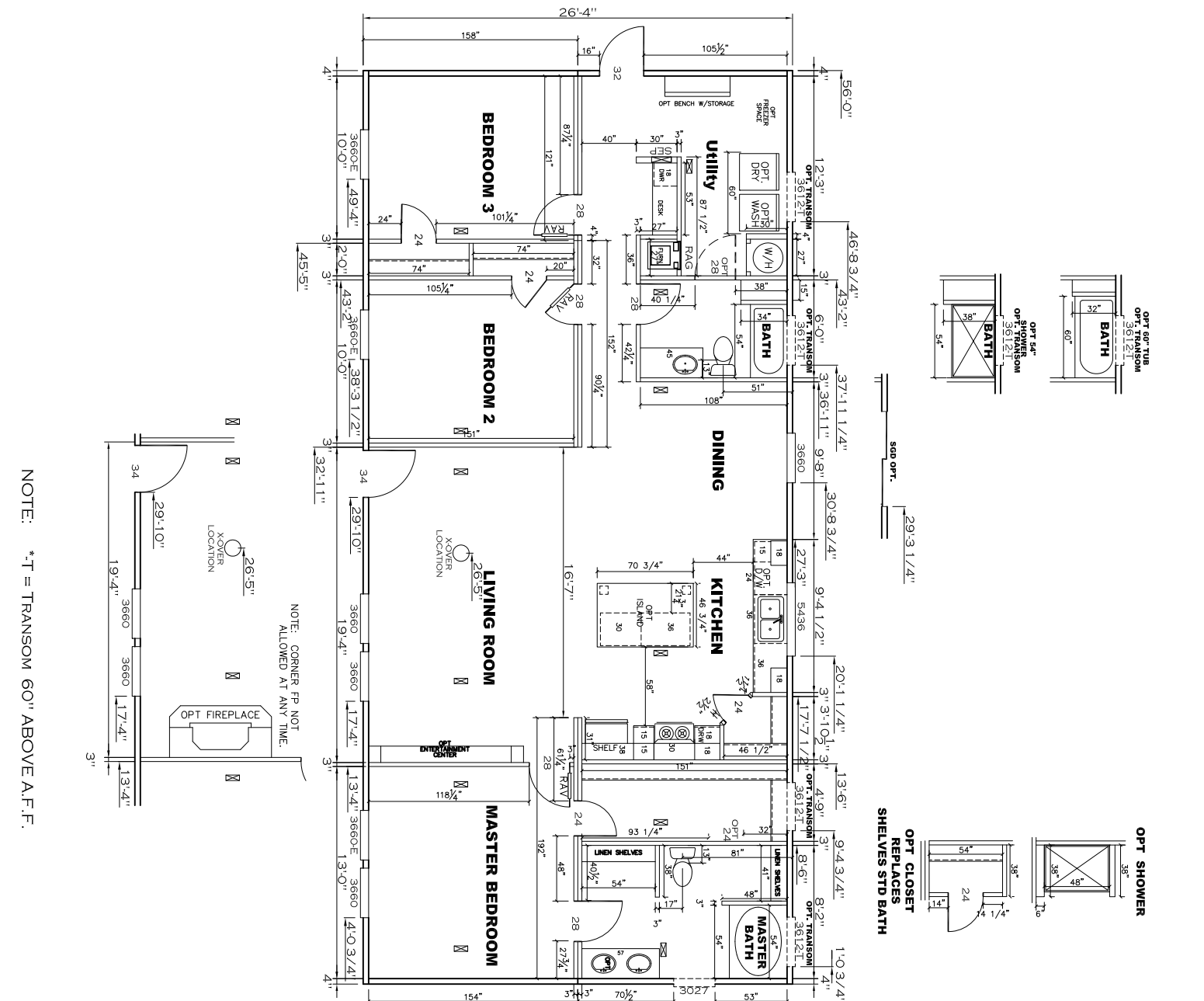


FP-28-4799

NOTE: *T = TRANSOM 60" ABOVE A.F.F.

FLOOR PLAN

| | | |
|--|-----------------------|------------|
| Product Designer: JDC | Model #: SUT28563D | Drawing #: |
| CMH MANUFACTURING | Identifying Code: N/A | 30M151 |
| 1475 SQ.FT. (STD PLAN "CONDITIONED") | | |
| SQ.FT. (W/OPT. PORCH/RECESS "CONDITIONED") | | |
| 28 x 56 Solution | | |



NOTE: CORNER FP NOT ALLOWED AT ANY TIME.

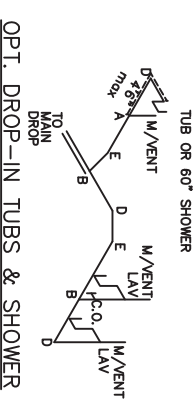
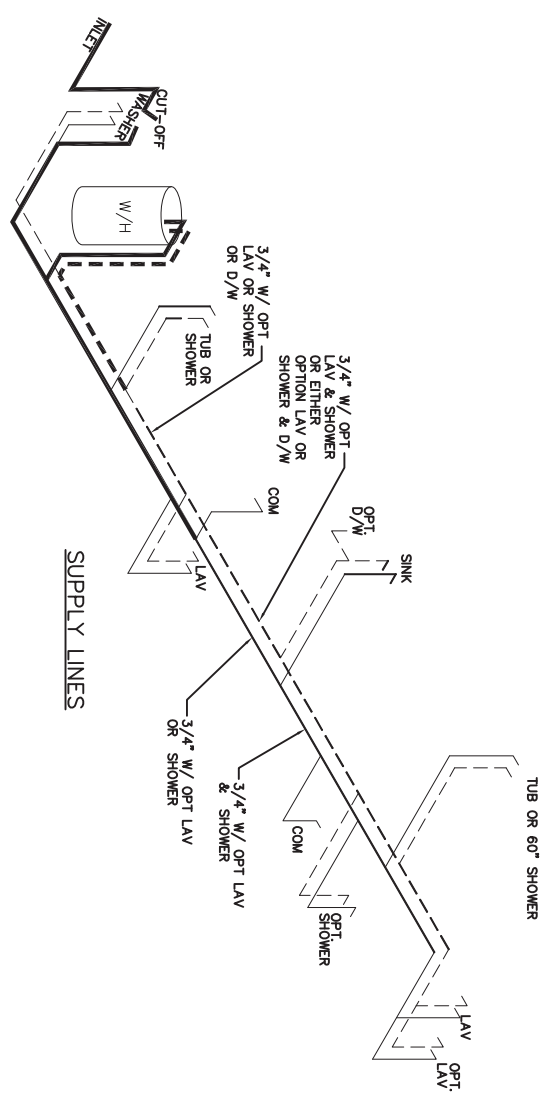
NOTE: *T = TRANSOM 60" ABOVE A.F.F.

| | | | |
|-----------------------------|--------------------|--|--------------------|
| CMH MANUFACTURING | | 1475 SQ.FT. (STD PLAN "CONDITIONED") SQ.FT. (W/OPT. PORCH/RECESS "CONDITIONED") | |
| Product Designer: JDC | Model #: SUT28563D | Drawing #: 30M151 | 28' x 56' Solution |

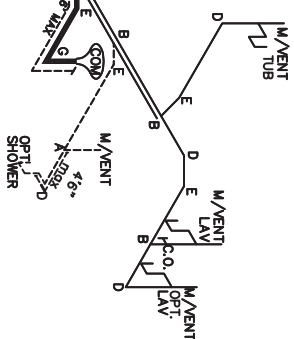
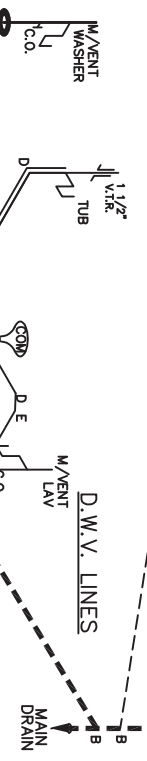
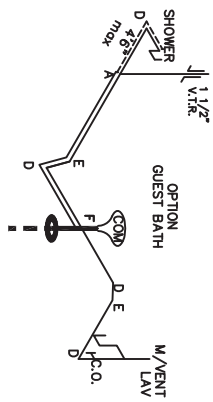
FLOOR PLAN

NOTE:
DASHED LINES INDICATE HOT WATER
SOLID LINES INDICATE COLD WATER

— = 3/4"
— = 1/2"



D W V G
APPROVED
REVISED
OCT 24 2016
APPROVED
 Federal Manufactured
 Home Construction
 And Safety Standards



LEGEND

| | |
|---|------------------------|
| A | SHORT TURN T-Y |
| B | LONG TURN T-Y |
| C | 1/4 BEND |
| D | LONG SWEEP 1/4 BEND |
| E | DOUBLE SANITARY TEE |
| F | 45° GOSSET ELL |
| G | DOUBLE ELL |
| H | 22 1/2° ELL |
| I | 45° Y |
| J | LONG TURN STREET ELBOW |
| K | |
| L | 45 FTG ELL |

DWV LINE SIZE CHART

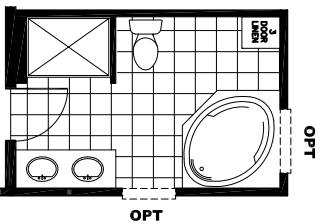
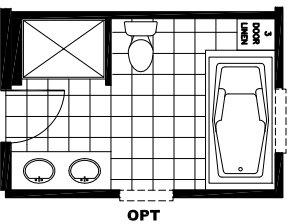
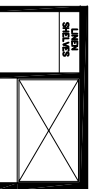
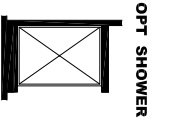
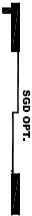
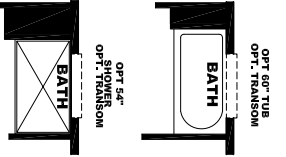
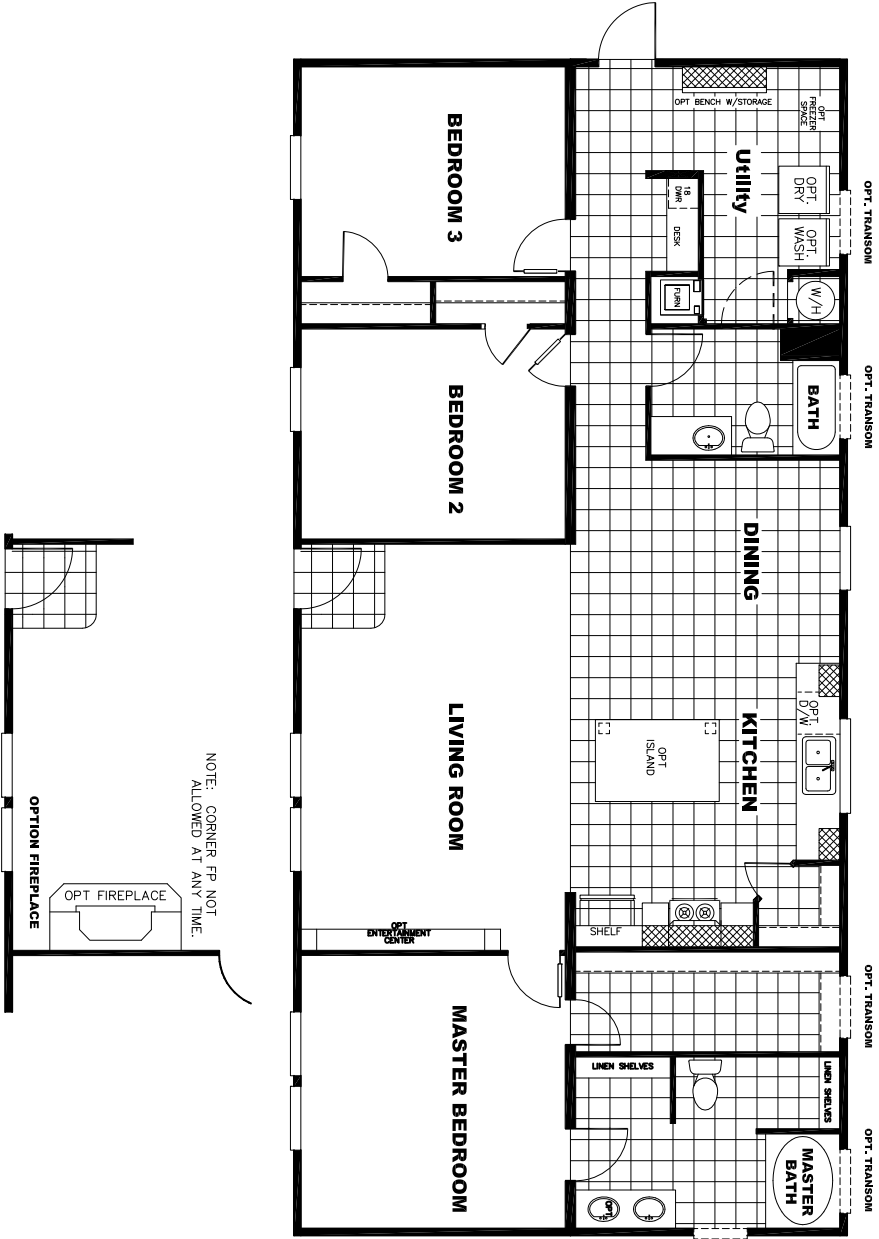
| | |
|---|----------|
| — | = 3" |
| — | = 2" |
| — | = 1 1/2" |

FP-28-4799

1475 SQ.FT. (STD PLAN "CONDITIONED")
 SQ.FT. (W/OPT. PORCH/RECESS "CONDITIONED")

| | | |
|-----------------------|--------------------|------------|
| CMH | Model #: SUT28563D | Drawing #: |
| MANUFACTURING | Drawing #: | |
| Product Designer: JDC | Issue N/A | 30M151 |

D.W.V. and Supply Lines



1475 SQ.FT.
Model #: SLT28563D
Solution
Drawing #:
38M151